

SFFL-type Sand-water separator



Sand-water mixture input from the top of the end of the separator tank, the particles with bigger severe in the mixture, such as sand, will be deposited on the bottom of the groove. Driven by spiral pushing, sand is lifted along the oblique bottom of the U-shape groove, and pushes a distance after leave the water surface. Sand fully-dehydrated is discharged to sand barrels by sand outlet, and the water overflow into the factory's intake pool from overflow port. Spiral sand-water separator is composed by shaft less screw, furring, U-type groove, water tank, guide plate, effluent weir and drive device.

In addition, the sand-water separator can also set a cylindrical cyclone pre-separator at the intake. Sewage inflow along the cylinder tangent, then flow into the sand spiral separator after separated sand by the vortex. The overflow liquid come back to the grit chamber or grill well, play the roles of a pre-settling and regulate water.

Features:

- 1, separation results as high as 96% ~ 98%, can isolate 0.2 mm diameter greater than or equal to the particles
- 2, it used shaftless spiral, prevent rubbish winding, and overload ability strong, no underwater bearings, easy maintenance, low malfunction
- 3, compact structure, take up the space is little, convenient installation
- 4, lining board for fast loading type, facilitate replacement
- 5, spiral shaft position can be adjusted and guarantee tail and box wall have enough security clearance

Uses: Sand-water separator is used in wastewater treatment plant grit chamber to separate sand from sand-water mixture discharged from grit chamber, also can used for light industry e.g. sugar, brewing, food processing of solid-liquid separation

型号	LSSF-260	LSSF-320	LSSF335	LSSF-420
处理量L/S	5~12	12~20	20~27	27~35
电动机功率 kW	0.37		0.75	

参数	型号	LSSF-260	LSSF-320	LSSF-355	LSSF-420
Lmm		4350	4770	6350	6700
L1mm		3840	4380	5890	6290
L2mm		3000		4000	
L3mm		1000	1500	2000	2500
Wmm		1653	1748	1880	1920
W1mm		1320	1420	1580	1880
W2mm		1200	1260	1420	1720
Hmm		2100	2350	3050	3250
H1mm		1670	1860	2480	2590
H2mm		1600	1800	2250	2250
B1mm		1260	1340	1506	1800
B2mm		326	406	441	506
A1mm		2700	2800	3900	3800
A2mm		100			
A3mm		300			
进水口直径mm		∅ 100	∅ 150	∅ 200	∅ 200
溢流口直径mm		∅ 150	∅ 200	∅ 250	∅ 250

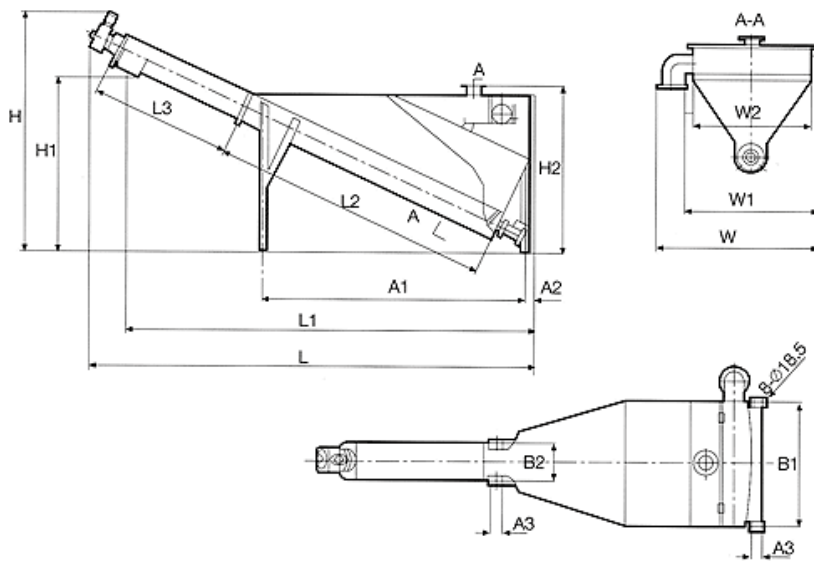


图1.LSSF型螺旋式砂水分离器外形图(不锈钢水箱)

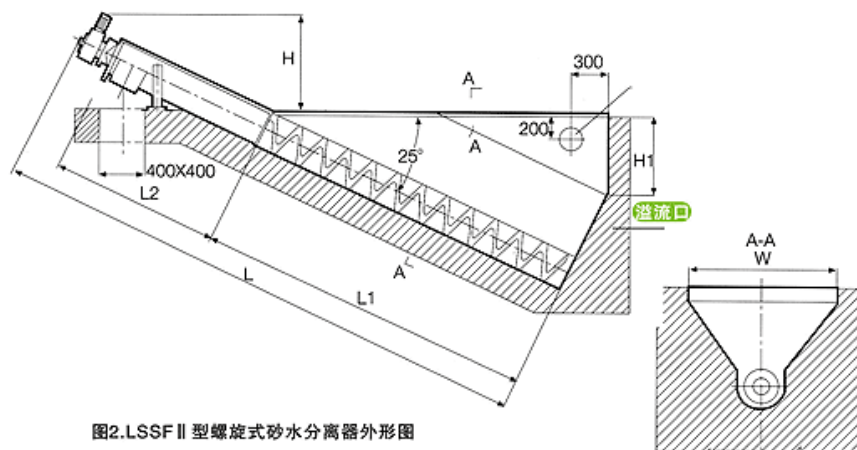


图2.LSSF II型螺旋式砂水分离器外形图